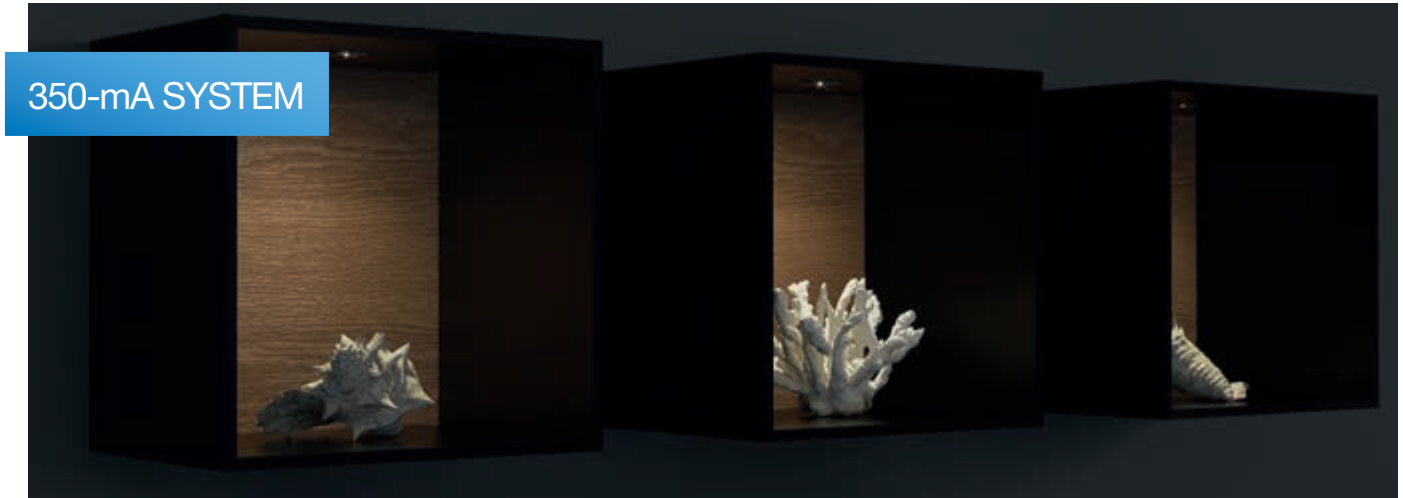


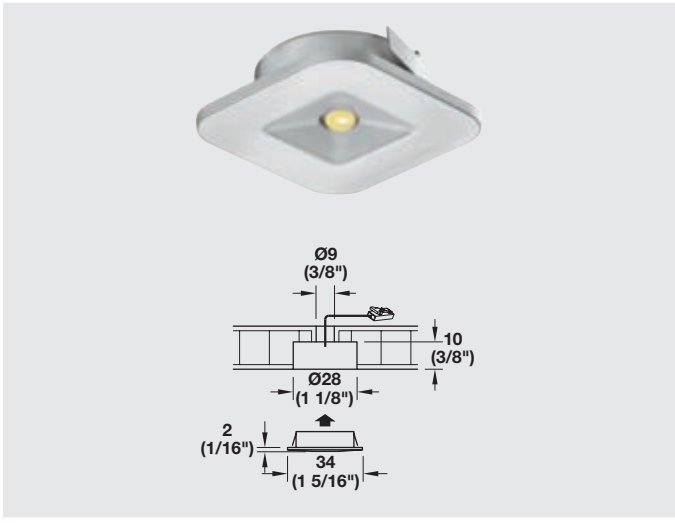
# LOOX LED 4007

RECESS MOUNTED LIGHT, SQUARE, ROUNDED



350-mA SYSTEM

- > Small and versatile with flexible alignment and a striking appearance
- > The light spot emphasizes objects in furniture

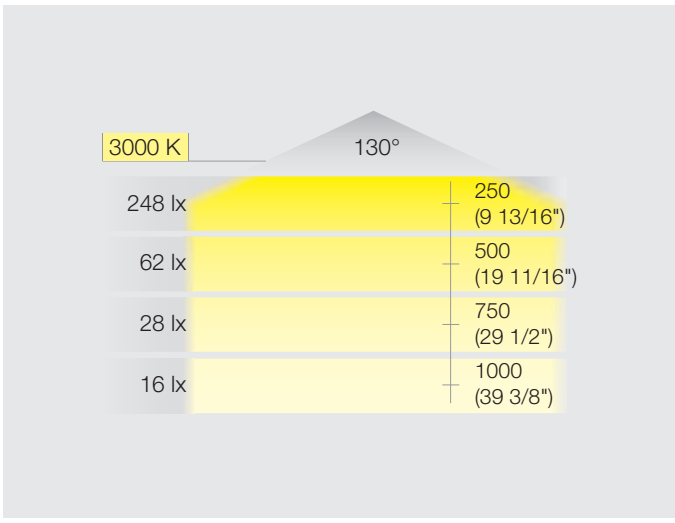


> Dimmable



> Driver see page 99  
> Drill bit see page 146

<b>Item No.</b>	<b>833.78.020</b>
<b>SRP</b>	<b>\$16.00</b>
Light Color (K)	3000 (warm white)
Drill hole	Ø28 mm (1 1/8")
L x W x H	34 x 34 x 12 mm (1 5/16" x 1 5/16" x 1/2")
Wattage	1
LEDs	1
Lumen	73
Lumen per watt	73
CRI	83
Energy Efficiency class	A+
Weighted energy consumption	1.10
Material/Finish	Plastic, silver colored anodized
Supplied with	2 m (78 3/4") lead, mounting material

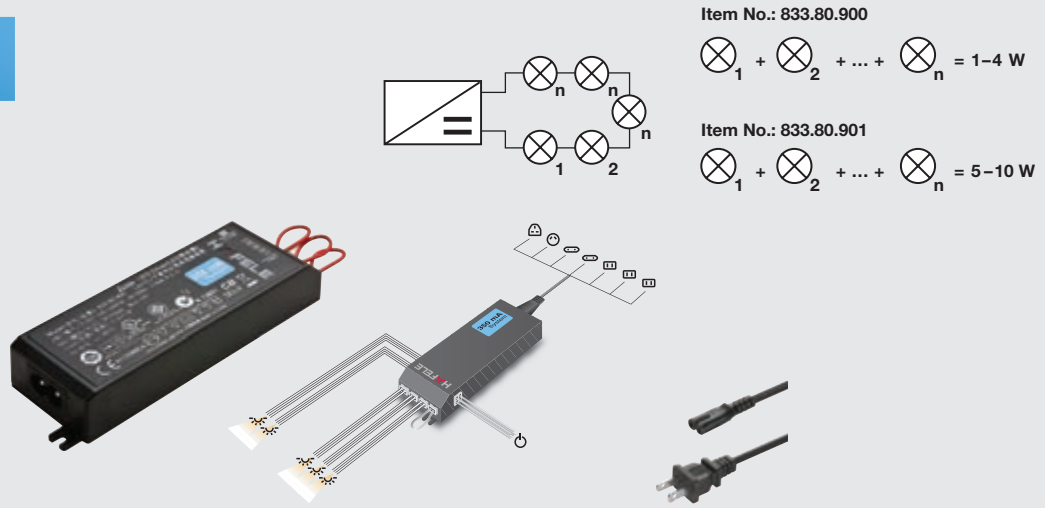


# LOOX LED DRIVER

CONSTANT VOLTAGE 350 mA DRIVER



**350-mA SYSTEM**



- > Suitable for all of the world's power systems
- > With an integrated port for a wide selection of switches

- > Degree of protection : IP20
- > LoOX drivers cannot be controlled by a dimmer wall switch
- > Switches see pages 113 - 116
- > Extension leads see page 127

- Power cord with 90° plug  
2 m (78 3/4")  
> Item No. 833.89.017 **SRP \$5.00**
- 90° Plug adapter  
> Item No. 833.89.018 **SRP \$7.00**
- Replacement jumper cable  
> Item No. 833.80.720 **SRP \$0.50**

Item No.	833.80.900	833.80.901
SRP	\$30.00	\$50.00
L x W x H	140 x 43 x 20 (5 1/2" x 1 11/16" x 13/16")	195 x 43 x 28 (7 11/16" x 1 11/16" x 1 1/8")
Wattage	1 - 4	5 - 10
Input voltage	100-240 V; 50-60 Hz	
Output current	350 mA	
Number of slots	4	10
Material/Finish	Plastic, black	
Supplied with	Mounting accessories, US power cord	

Country-specific 2 m (78 3/4") primary leads								3 m (118")
Item No.	833.89.000	833.89.001	833.89.002	833.89.003	833.89.016	833.89.005	833.89.050	833.89.008
SRP	\$10.00	\$4.00	\$4.00	\$4.00	\$4.00	\$4.00	\$4.00	\$6.00
Plug design								
Designation	UK	AU	EU	US	JP	CN	US	US
Voltage (V)	250	250	250	120	100	250	120	120